

## Tulum large sofa

by Eugeni Quitllet

Tulum, designed by Eugeni Quitllet, is a collection of designer furniture to live freely anywhere in the world.



## Info

---

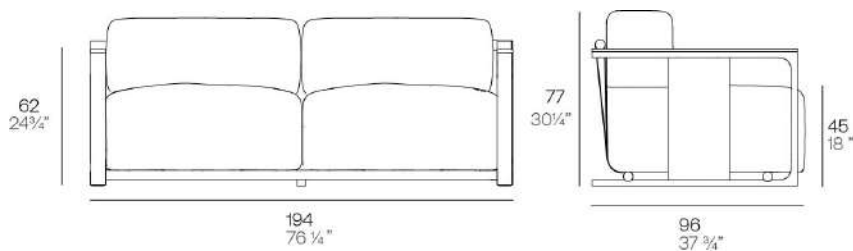
### Description

Eugeni Quitlet fuses high-quality materials and advanced technology in this two-seater sofa. With aluminium profiles treated with epoxy paint and precise welding, Indonesian teak wood details,

upholstery of different densities and removable back fabric, Tulum combines comfort and durability.

This designer furniture collection is an elegant harmony of natural materials and technology, ideal for indoors and outdoors.

Weight: 72 Kg



Tulum, Sofá L  
Tulum, Large Sofa  
ref. 65071

## Finishes

---

### finishes

---

#### TEAK FINISH – Natural

Ref. 65071



white



smoked



ecru



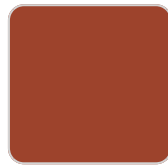
tortora



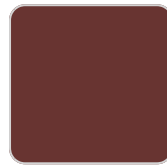
cream



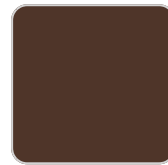
camel



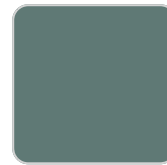
clay



garnet



brown



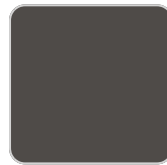
green



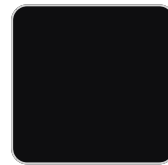
blue



gray



anthracite



black



ocean

#### TEAK FINISH – Weathered

Ref. 65071E



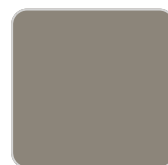
white



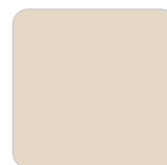
smoked



ecru

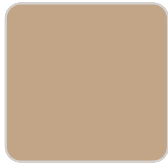


tortora

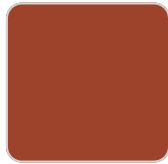


cream

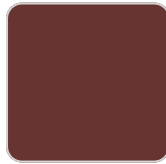
# VONDOM



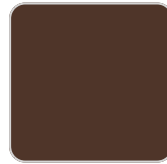
camel



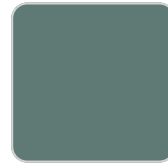
clay



garnet



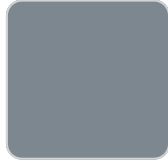
brown



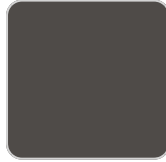
green



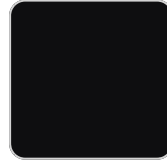
blue



gray



anthracite



black



ocean

## fabric

---

### GETARIA

Ref. 65070CO



brown 10050 getaria



terra 10039 getaria



granite 10008 getaria



tortora 10048 getaria



camel 10033 getaria



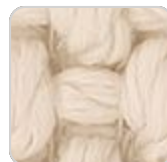
oasis 10007 getaria



gallant 10025 getaria



pearl 10006 getaria



cream 10047 getaria



blue 10024 getaria



oversea 10002 getaria



garnet 10046 getaria



ocean 10023 getaria



black 10044 getaria



emerald 10016  
getaria



anthracite 10043  
getaria



white 10041 getaria



niord 10015 getaria



moon 10040 getaria



dune 10009 getaria

# VONDOM

Group 2. Premium high density 100% acrylic fabric, available in a wide range of colors.

## BAIONA Ref. 65070CO



brown 10108 baiona



garnet 10107 baiona



black 10114 baiona



clay 10106 baiona



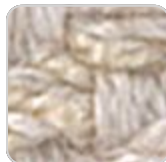
gray 10113 baiona



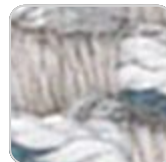
camel 10104 baiona



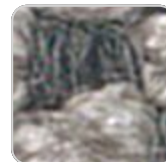
blue 10112 baiona



cream 10103 baiona



ocean 10111 baiona



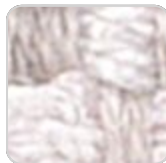
tortora 10102 baiona



green 10110 baiona



ecru 10101 baiona



white 10100 baiona



jade 10109 baiona

Group 1C. High density 100% acrylic fabric, which provides a solid feel. It has an irregular pattern that adds a handcrafted touch.

## CALELLA Ref. 65070CO



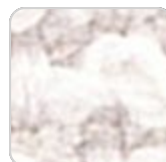
anthracite 10129  
calella



ecru 10121 calella



gray 10128 calella



white 10120 calella



blue 10127 calella

# VONDOM



jade 10126 calella



clay 10125 calella



mustard 10124 calella



cream 10123 calella



tortora 10122 calella

Group 1C. PFAS-free 100% acrylic fabric with a rich and unusual texture and an exceptional softness, which enhances the comfort of the furniture.

## FISTERRA

Ref. 65070CO



cream 10132 fisterra



white 10130 fisterra



ecru 10131 fisterra



tortora 10135 fisterra



camel 10134 fisterra



peach 10146 fisterra



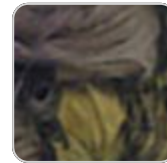
clay 10137 fisterra



garnet 10138 fisterra



brown 10136 fisterra



olive 10145 fisterra



jade 10139 fisterra



green 10140 fisterra



ocean 10141 fisterra



blue 10142 fisterra



gray 10143 fisterra



anthracite 10144  
fisterra



black 10147 fisterra

Group 1C. 100% acrylic fabric, with a distinctive irregular marbled pattern and a soft feel.

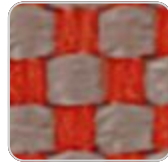
## PORTONOVO

# VONDOM

Ref. 65070CO



anthracite 10164  
portonovo



clay 10156 portonovo



gray 10163 portonovo



mustard 10155  
portonovo



camel 10154  
portonovo



blue 10162 portonovo



cream 10153  
portonovo



ocean 10161  
portonovo



tortora 10152  
portonovo



green 10160  
portonovo



ecru 10151 portonovo



jade 10159 portonovo



brown 10158  
portonovo



white 10150  
portonovo



black 10165  
portonovo



garnet 10157  
portonovo

Group 1A. 100% acrylic fabric, with a flat and simple design, which adapts to any decorative style.

## ZUMAIA

Ref. 65070CO



black 10205 zumaia



green 10204 zumaia



blue 10203 zumaia



garnet 10202 zumaia



cream 10201 zumaia

# VONDOM



white 10200 zumaia

Group 2. Elegant 100% acrylic fabric, with a soft terry, pleasant to the touch and a unique color combination.

## SUANCES

Ref. 65070CO



peach 10316 suances



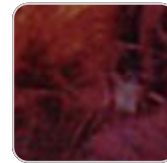
brown 10308 suances



white 10300 suances



black 10315 suances



garnet 10307 suances



anthracite 10314  
suances



clay 10306 suances



gray 10313 suances



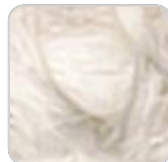
mustard 10305  
suances



camel 10304 suances



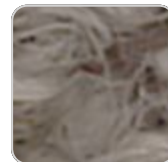
blue 10312 suances



cream 10303 suances



ocean 10311 suances



tortora 10302 suances



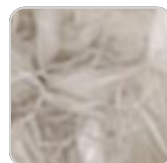
green 10310 suances



olive 10317 suances



jade 10309 suances



ecru 10301 suances

Group 2. Bocol fabric, which stands out for its warmth and softness, with matching colors that add depth and elegance.

## RIBADEO

# VONDOM

Ref. 65070CO



clay 10326 ribadeo



anthracite 10334 ribadeo



gray 10333 ribadeo



mustard 10325 ribadeo



blue 10332 ribadeo



camel 10324 ribadeo



ocean 10331 ribadeo



cream 10323 ribadeo



green 10330 ribadeo



tortora 10322 ribadeo



mint 10337 ribadeo



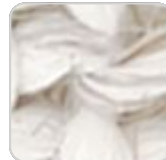
jade 10329 ribadeo



ecru 10321 ribadeo



brown 10328 ribadeo



white 10320 ribadeo



olive 10336 ribadeo



garnet 10327 ribadeo



peach 10335 ribadeo

Group 2. Soft fabric with marbled yarns of different thicknesses that create a rich and visually interesting texture. Its Linen look adds a touch of natural style.

## LOURO

Ref. 65070CO



anthracite 10354 louro



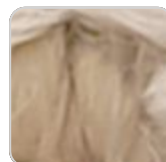
clay 10346 louro



gray 10353 louro



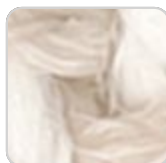
mustard 10345 louro



camel 10344 louro



blue 10352 louro



cream 10343 louro



ocean 10351 louro



tortora 10342 louro



green 10350 louro

# VONDOM



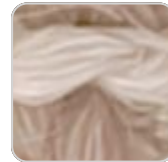
jade 10349 louro



olive 10356 louro



brown 10348 louro



peach 10355 louro



garnet 10347 louro

Group 2. Soft and versatile fabric, which presents a neutral base color that makes it easy to combine with different colors and fabrics.

## ALTEA

Ref. 65070CO



tortora 1102 altea



white 1100 altea



camel 1120 altea



clay 1122 altea



garnet 1106 altea



brown 1104 altea



jade 1125 altea



ocean 1123 altea



gray 1101 altea



anthracite 1124 altea



black 1105 altea

Group 1A. Soft outdoor fabric with leather-like texture.

## AROUSA

Ref. 65070CO



tortora 1209 arousa



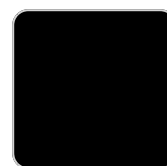
camel 1230 arousa



clay 1231 arousa



brown 1214 arousa



jade 1235 arousa

# VONDOM



gray 1208 arousa



anthracite 1210  
arousa

Group 1B. Soft outdoor fabric with shiny finish.

## Ambients

---

